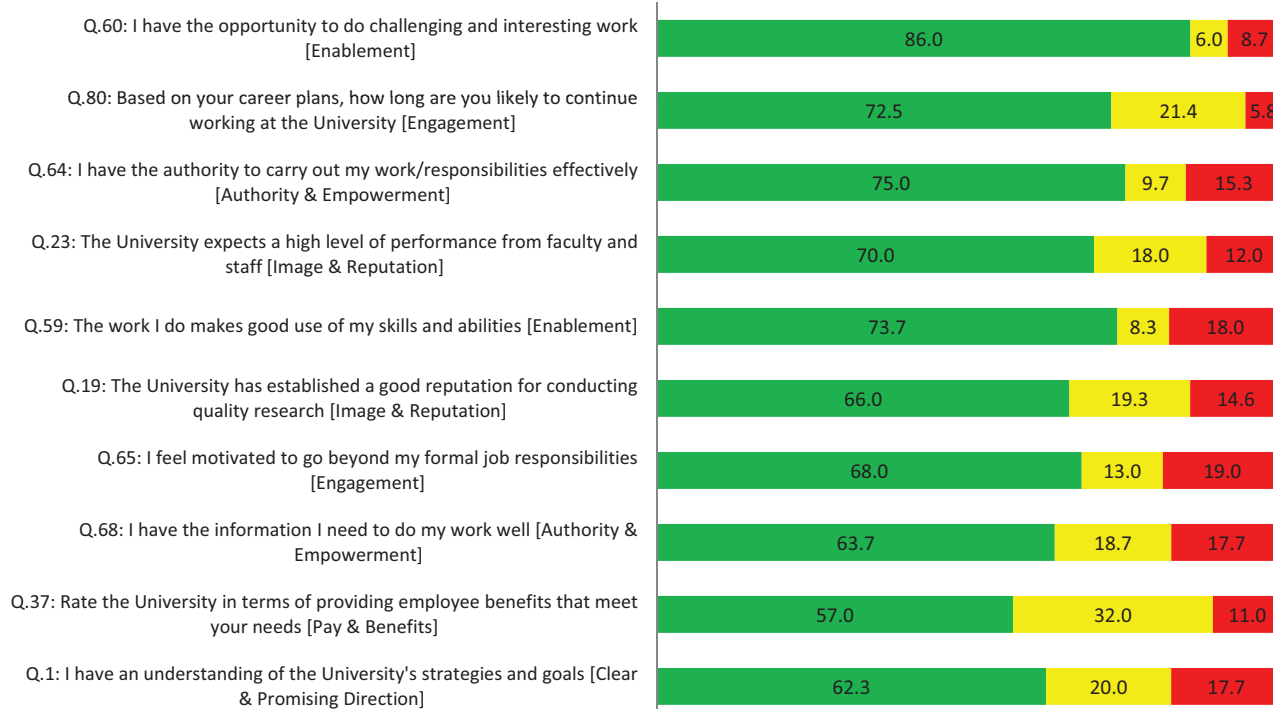


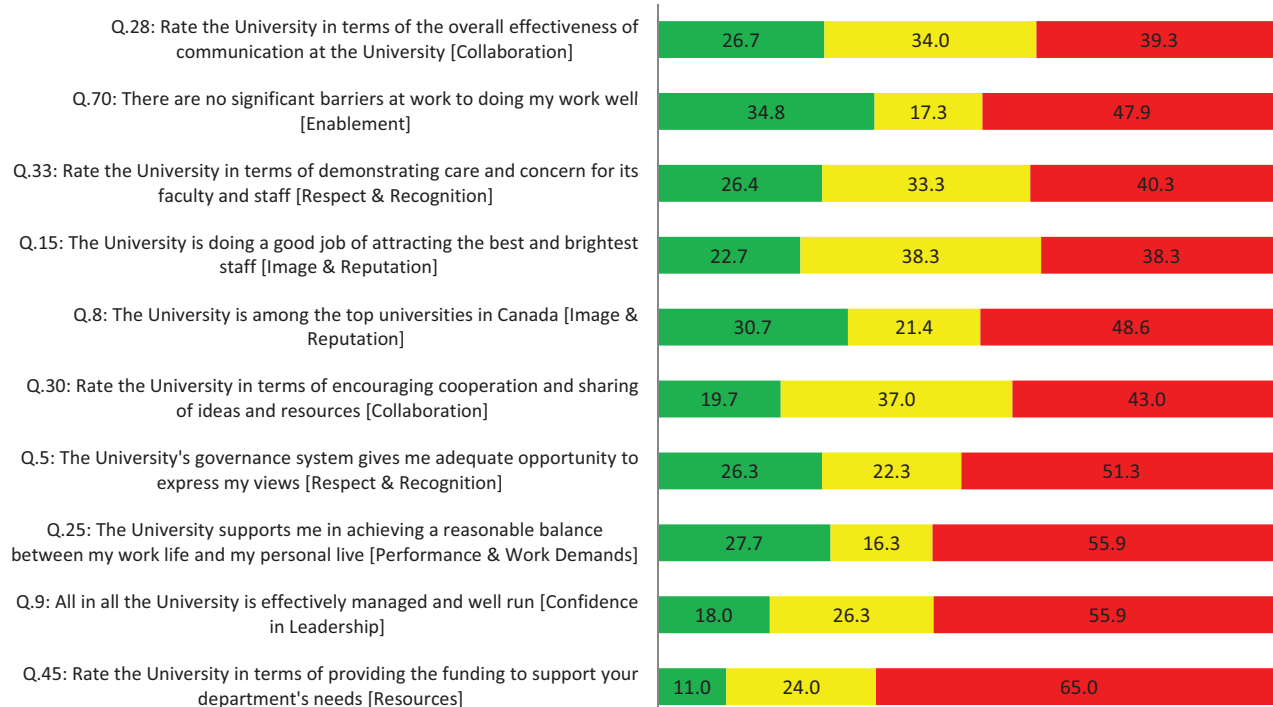
Top-10 Scoring Questions [& question category]

■ %Favourable ■ %Neutral ■ %Unfavourable



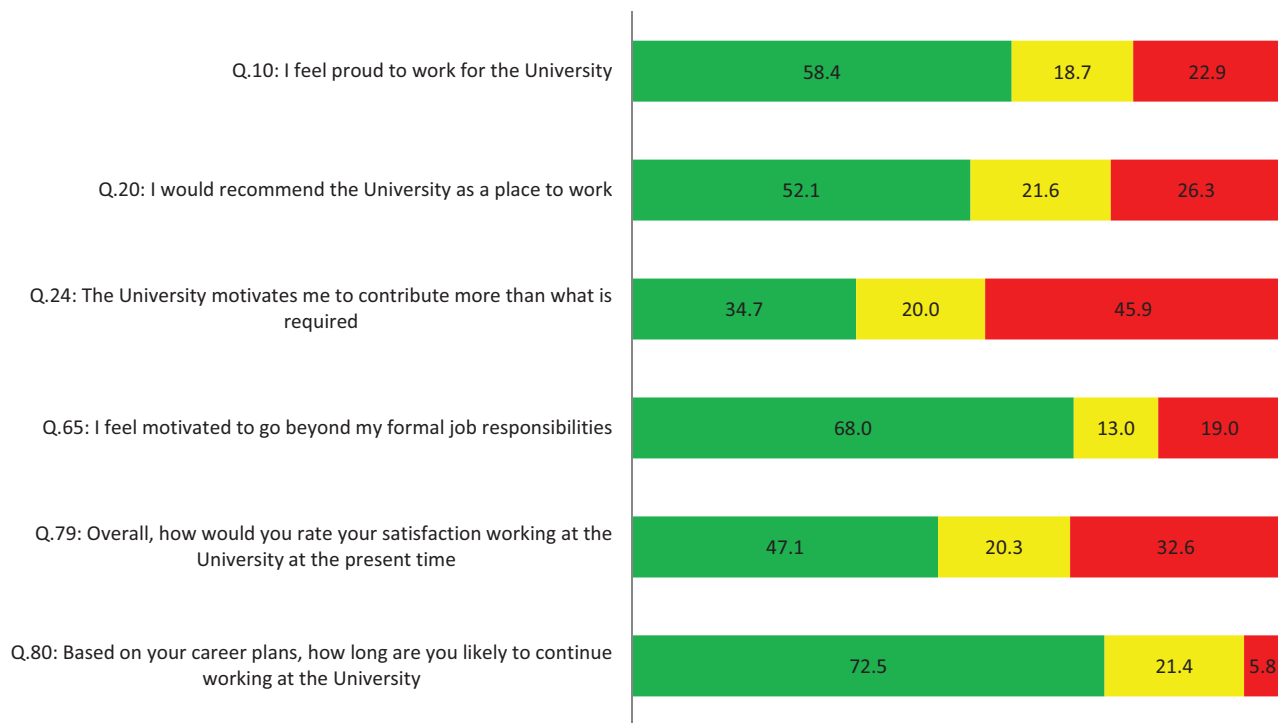
Bottom-10 Scoring Questions [& question category]

■ %Favourable ■ %Neutral ■ %Unfavourable



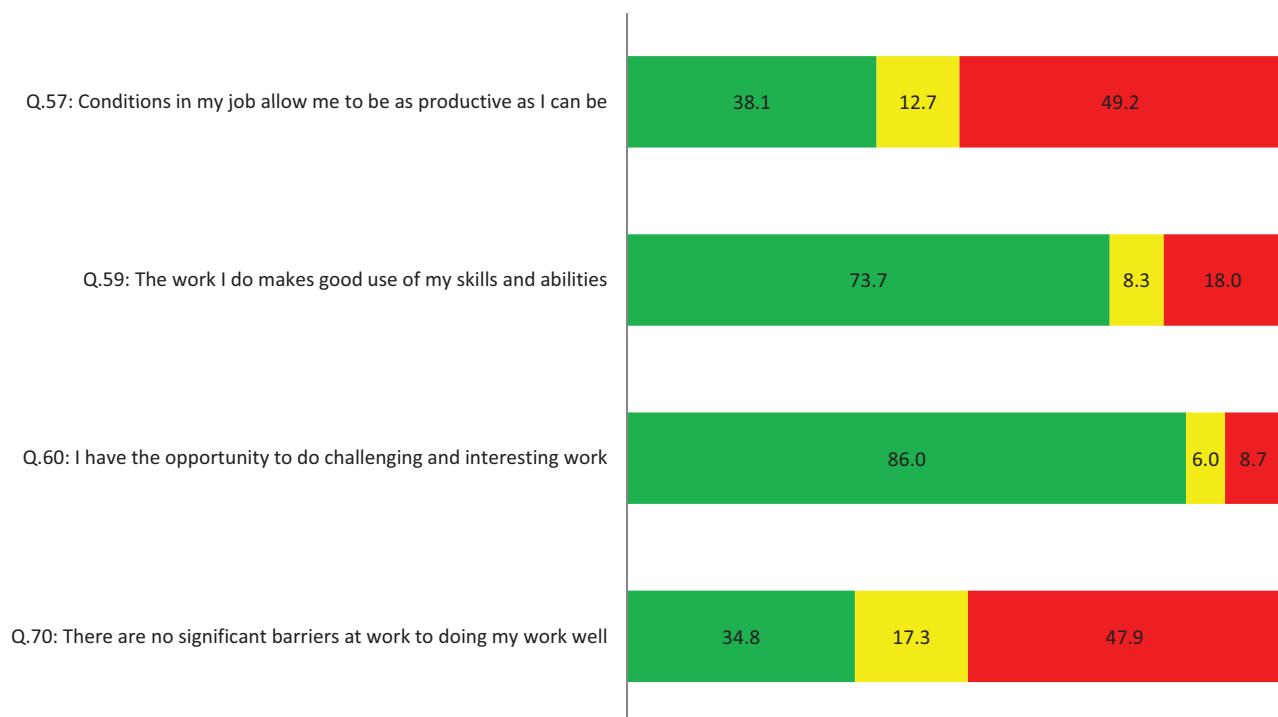
"Engagement" Questions

■ %Favourable ■ %Neutral ■ %Unfavourable



"Enablement" Questions

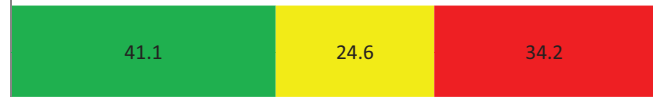
■ %Favourable ■ %Neutral ■ %Unfavourable



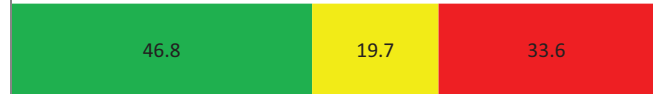
"Faculty/Institute/Administrative Unit" Questions

■ %Favourable ■ %Neutral ■ %Unfavourable

Q.46: Rate the leadership of your unit in terms of the trust and confidence you have in it



Q.54: All in all my faculty/institute/administrative unit is effectively managed and well run



Q.55: I feel proud to work for my faculty/institute/ administrative unit



Q.56: I would recommend my faculty/institute/administrative unit as a place to work



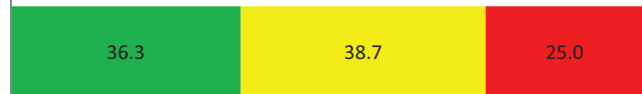
"Clear & Promising Direction" Questions

■ %Favourable ■ %Neutral ■ %Unfavourable

Q.1: I have an understanding of the University's strategies and goals



Q.2: I believe the University's goals are the right ones for the University at this time



Q.6: I understand the relationship between my job and the University's strategies and goals



Q.11: I am optimistic about the future of the University



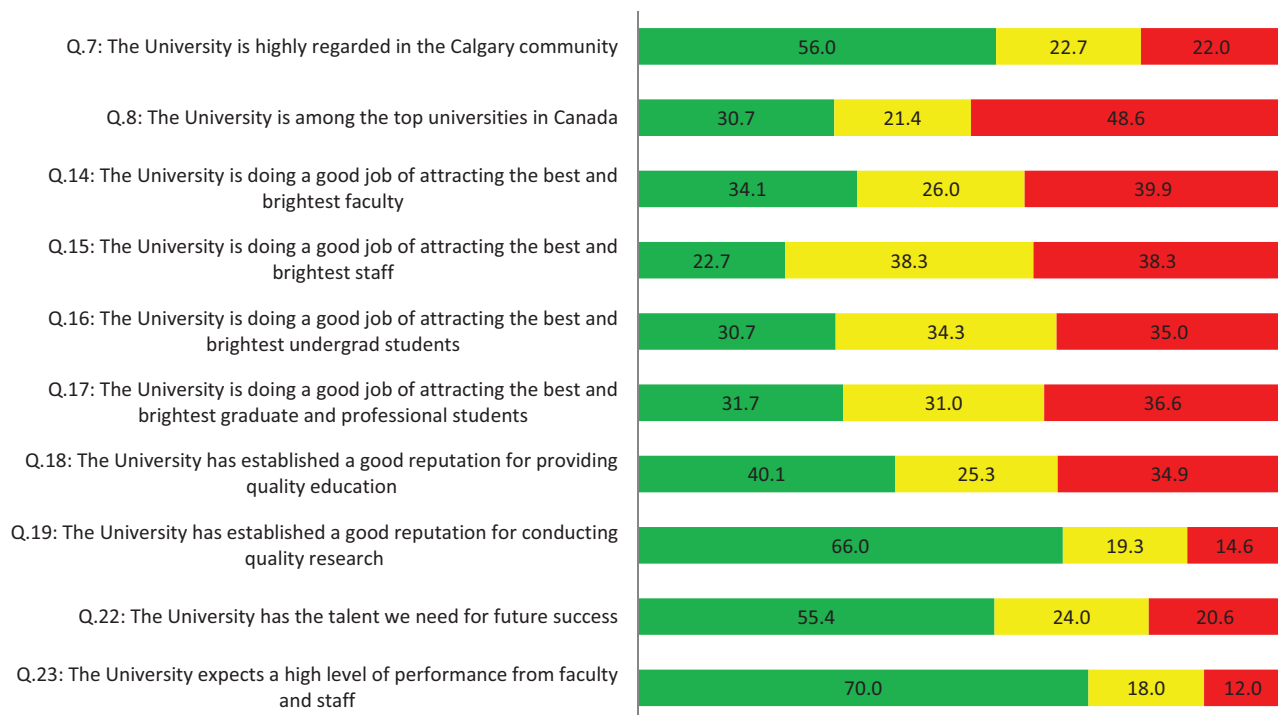
"Confidence in Leadership" Questions

■ %Favourable ■ %Neutral ■ %Unfavourable



"Image & Reputation" Questions

■ %Favourable ■ %Neutral ■ %Unfavourable



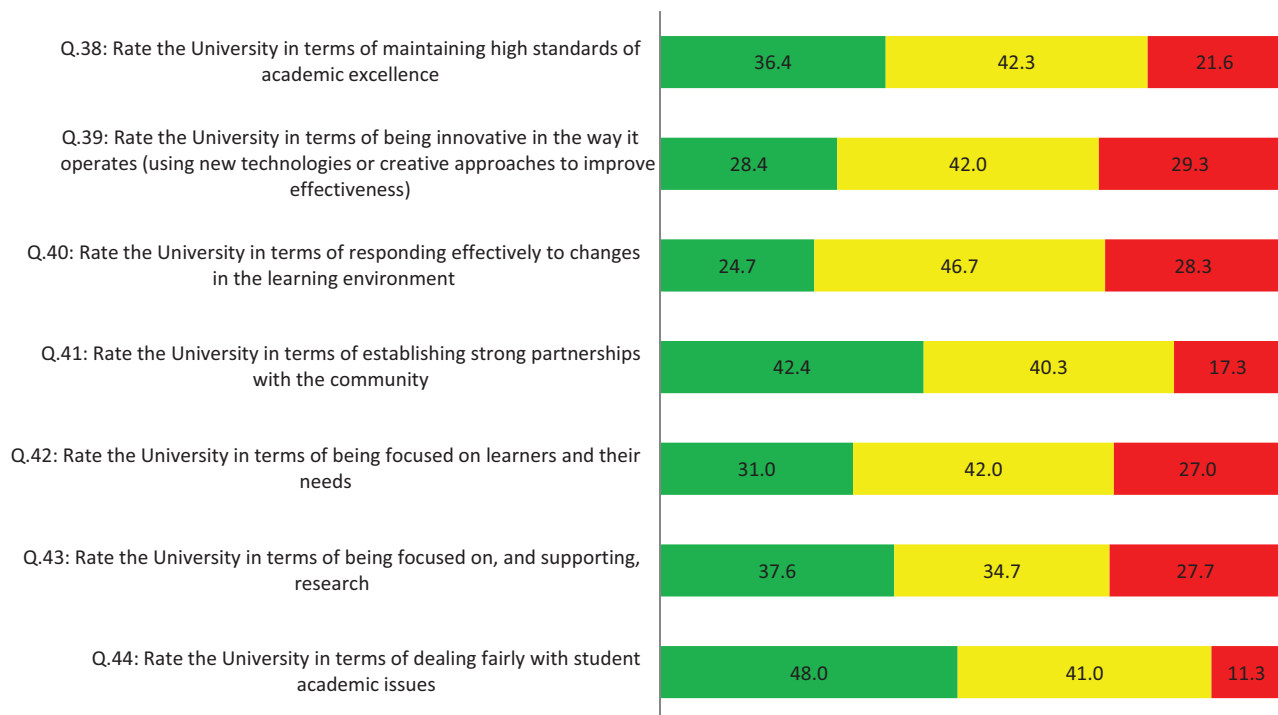
"University Issues" Questions

■ %Favourable ■ %Neutral ■ %Unfavourable



"Learning & Research Focus" Questions

■ %Favourable ■ %Neutral ■ %Unfavourable



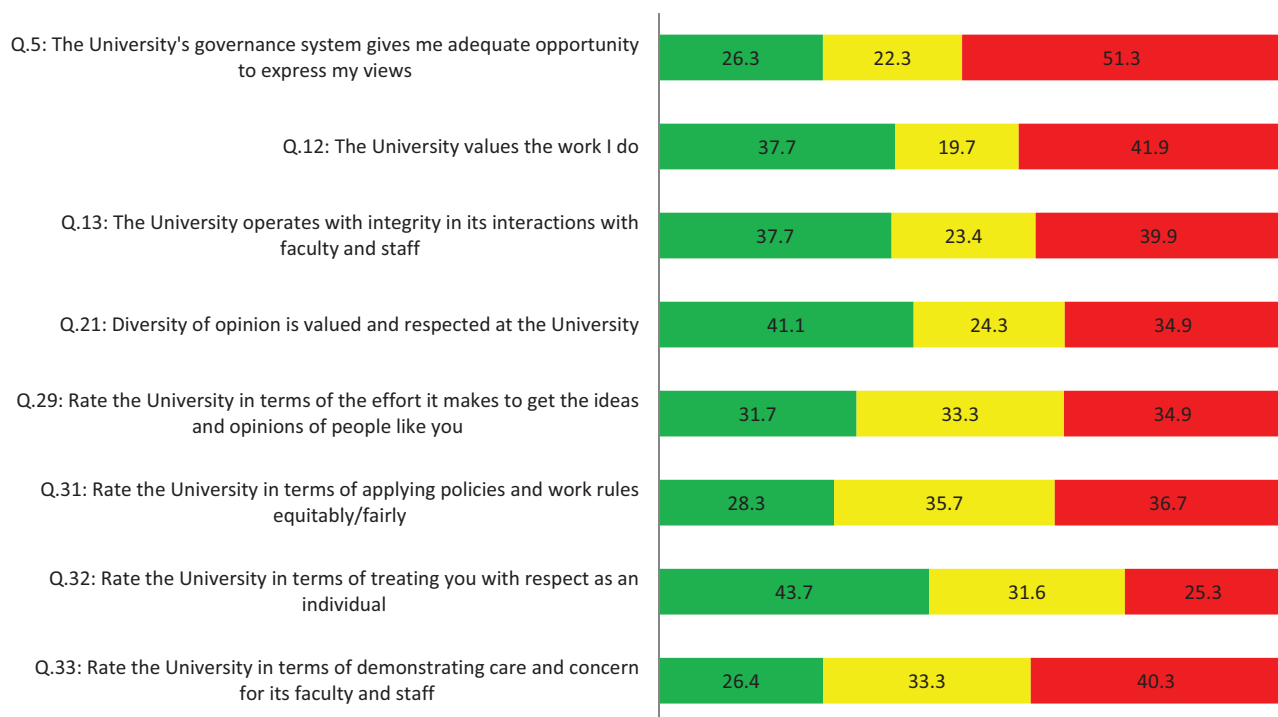
"Development Opportunities" Questions

■ %Favourable ■ %Neutral ■ %Unfavourable



"Respect & Recognition" Questions

■ %Favourable ■ %Neutral ■ %Unfavourable



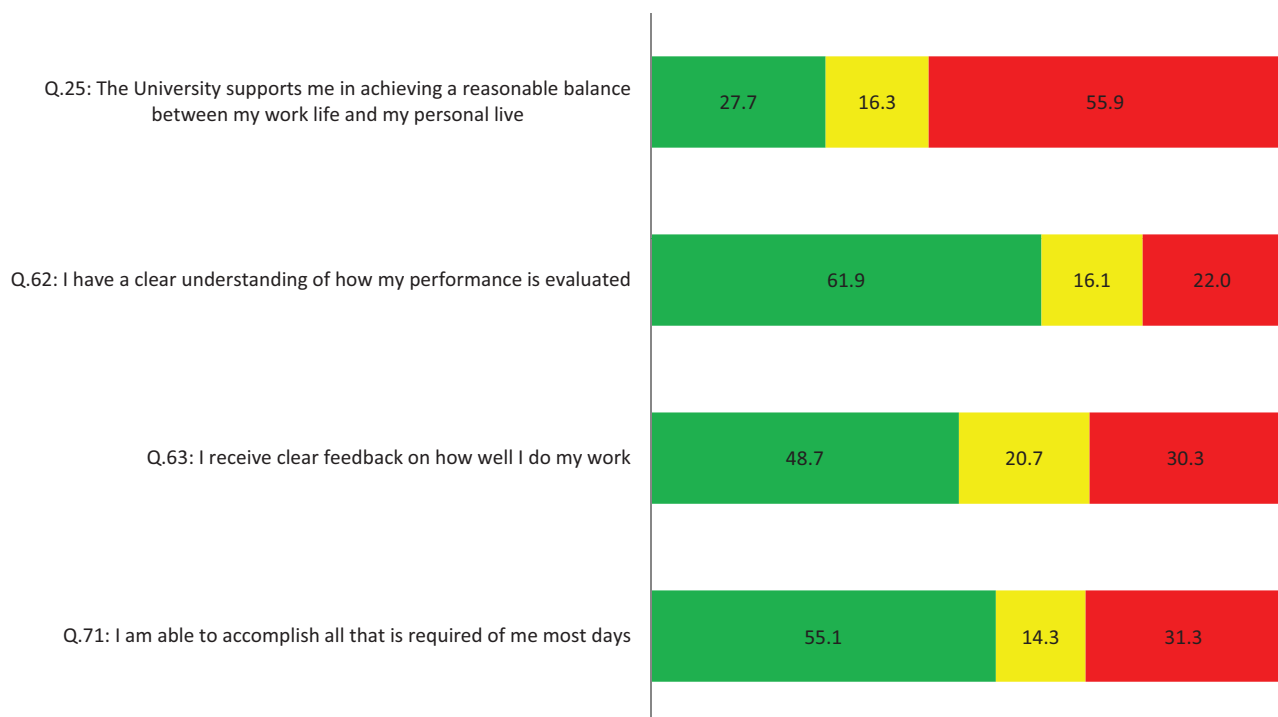
"Pay & Benefits" Questions

■ %Favourable ■ %Neutral ■ %Unfavourable



"Performance & Work Demands" Questions

■ %Favourable ■ %Neutral ■ %Unfavourable



"Authority & Empowerment" Questions

■ %Favourable ■ %Neutral ■ %Unfavourable

Q.58: I have opportunities to have my ideas adopted and put into use

54.7

18.7

26.6

Q.64: I have the authority to carry out my work/responsibilities effectively

75.0

9.7

15.3

Q.68: I have the information I need to do my work well

63.7

18.7

17.7

"Resources" Questions

■ %Favourable ■ %Neutral ■ %Unfavourable

Q.45: Rate the University in terms of providing the funding to support your department's needs

11.0

24.0

65.0

Q.47: Rate the leadership of your faculty/institute/administrative unit in terms of allocating its human resources in an effective manner

27.8

34.6

38.2

Q.69: I have the resources I need to do my work effectively

38.8

17.3

43.3

Q.72: Rate overall working conditions

43.8

33.9

22.6

Q.73: Rate quality of your workspace

52.4

27.0

20.7

Q.74: Rate quality of classrooms

35.3

36.3

28.4

Q.75: Rate quality of labs

41.4

35.0

24.2

Q.76: Rate quality of technology and computer equipment

42.7

37.7

19.7

Q.77: Rate availability of equipment, supplies, materials, etc. that you need to do your job

41.4

34.3

24.9

Q.78: Rate dealing with timetabling and scheduling issues

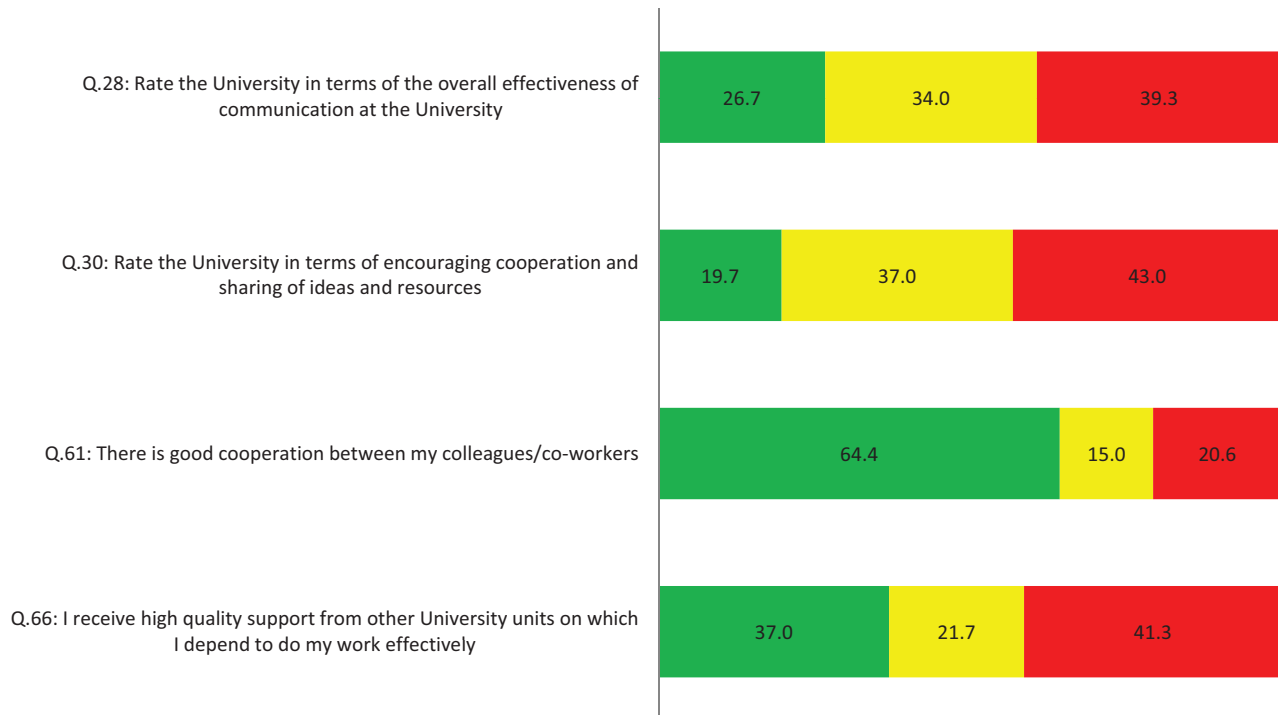
36.7

38.3

24.3

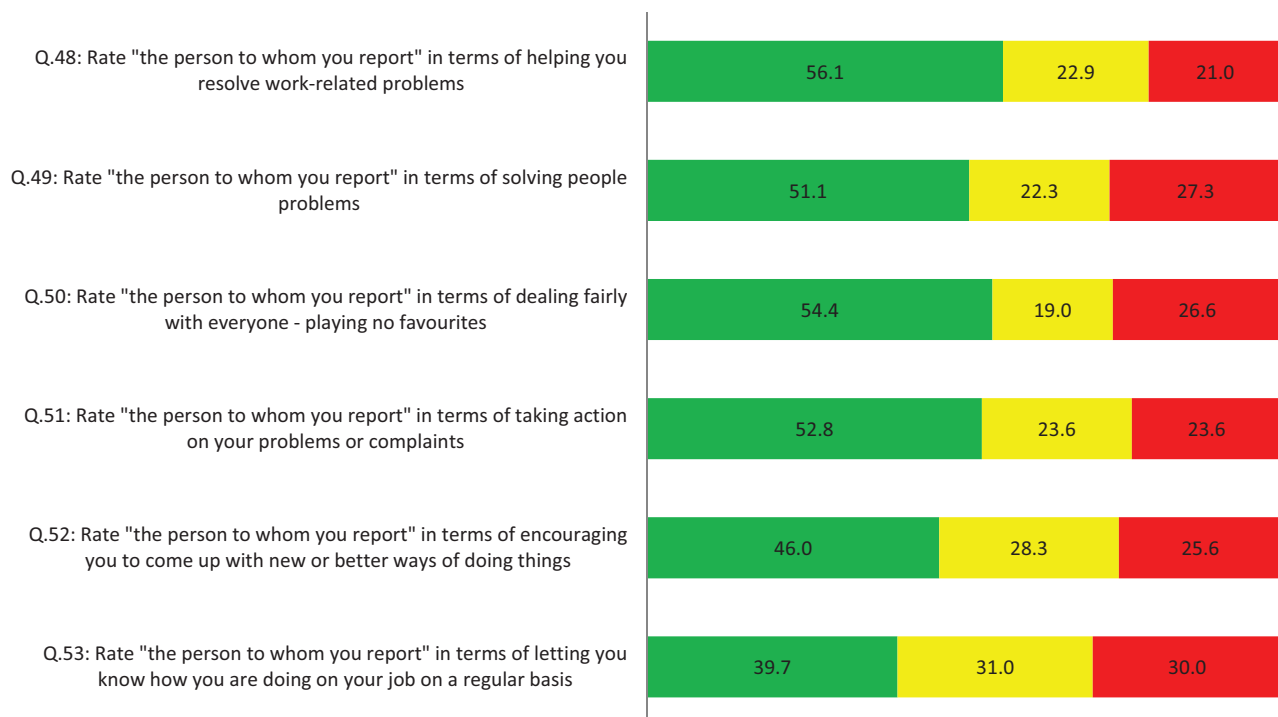
"Collaboration" Questions

■ %Favourable ■ %Neutral ■ %Unfavourable



"Supervision" Questions

■ %Favourable ■ %Neutral ■ %Unfavourable



Average Response by Question Category

■ %Favourable ■ %Neutral ■ %Unfavourable

